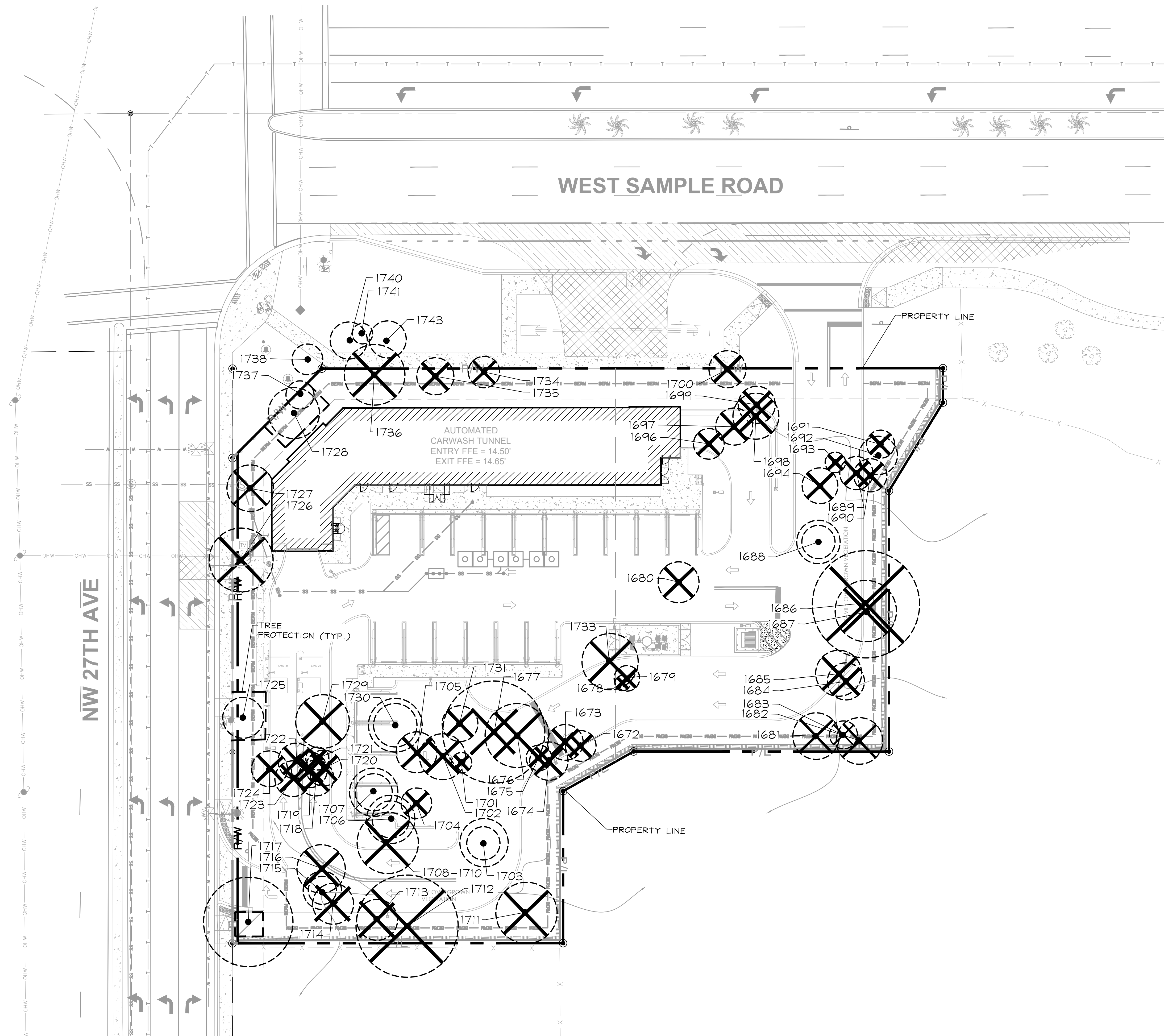
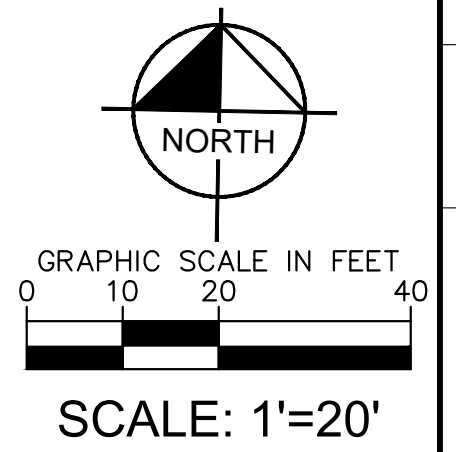




Plotted By: Hargrett, Tom Sheet Set: 2690 WEST SAMPLE ROAD Layout: L1.00 TREE DISPOSITION PLAN September 16, 2025 01:09:22pm K:\ftl\_civil\143 Jobs\143360001 2690 west sample road civil.dwg Design\CADD\plansheets\TREE DISPOSITION.dwg  
This document, together with the concepts and designs presented herein, is an instrument of service intended only for the specific purpose and client for which it was prepared. Reuse of this document without written authorization and indemnity by Kinzie-Horvath LLC is prohibited.



	TREE TO REMAIN
	TREE TO BE REMOVED
	TREE TO BE RELOCATED
	TREE TO BE PROTECTED PER DETAIL ON THIS SHEET



THE PRESENCE OF GROUNDWATER SHOULD BE ANTICIPATED. CONTRACTOR'S BID SHALL INCLUDE CONSIDERATION FOR ADDRESSING THIS ISSUE AND OBTAINING ALL NECESSARY PERMITS.

ALL ELEVATIONS SHOWN ON THESE PLANS ARE  
BASED ON THE NAVD 88. TO CONVERT THE  
ELEVATION HEREON TO NGVD 29 ADD 1.51  
FEET.



**KNOW WHAT'S BELOW  
ALWAYS CALL 811  
BEFORE YOU DIG**

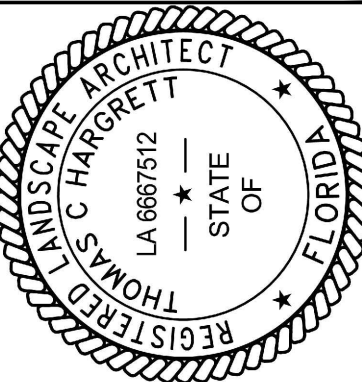
It's fast. It's free. It's the law.

[allsunshine.com](http://allsunshine.com)

# TREE DISPOSITION PLAN

2690 WEST SAMPLE ROAD  
PREPARED FOR  
NATIONAL EXPRESS  
WASH LLC  
CITY OF POMPANO  
BEACH  
FLORIDA

KHA PROJECT 143360001	DATE SEPT 2025	SCALE AS SHOWN	DESIGNED BY NR	DRAWN BY NR	CHECKED BY TH
--------------------------	-------------------	----------------	----------------	-------------	---------------



**Kimley»»Horn**  
© 2025 KIMLEY-HORN AND ASSOCIATES, INC.  
8201 PETERS ROAD, SUITE 2200, PLANTATION, FL 33324  
PHONE: 954-335-5100 FAX: 954-739-2247  
WWW.KIMLEY-HORN.COM  
REGISTRY No. 696

[illegible]

SHEET NUMBER  
**L1.00**